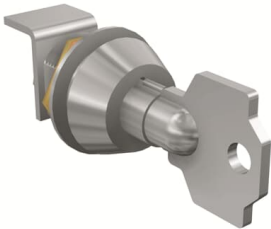




PRODUCT-DETAILS

RHL T1-2-3 KEY LOCK EQ.N2006  
ROT.HANDLE2

RHL T1-2-3 KEY LOCK EQ.N2006  
ROT.HANDLE2



General Information	
Extended Product Type	RHL T1-2-3 KEY LOCK EQ.N2006 ROT.HANDLE2
Product ID	1SDA060147R1
EAN	8015644625955
Catalog Description	RHL T1-2-3 KEY LOCK EQ.N2006 ROT.HANDLE2
Long Description	KEY LOCK EQUAL N.20006 IN OPEN FOR ROTARY HANDLE OPERATING MECH. BETWEEN MORE C.BREAKERS T1-T2-T3

Environmental	
Environmental Information	1SDC210015D0201

Ordering	
EAN	8015644625955
Minimum Order Quantity	1 piece
Customs Tariff Number	85389099

Dimensions	
Product Net Weight	0.1 kg

Container Information	
Package Level 1 Units	1 piece
Package Level 1 Gross Weight	0.1 kg
Package Level 1 EAN	8015644625955

Additional Information	
Product Main Type	Accessories for Tmax T
Product Name	Accessory
Product Type	ACC
Suitable For	T1, T2, T3
Suitable for Product Class	SACE Tmax T

Technical	
Configuration Type	Loose or configurable
Standards	IEC

Certificates and Declarations	
Data Sheet, Technical Information	1SDC210015D0201
Declaration of Conformity - CE	Refer to the EU Declaration of the relative Circuit Breaker
Instructions and Manuals	1SDC210015D0201

Classifications	
ETIM 8	EC002498 - Accessories/spare parts for low-voltage switch technology
Object Classification Code	Q
UNSPSC	39120000
WEEE Category	5. Small Equipment (No External Dimension More Than 50 cm)

---

## Categories

---

Low Voltage Products and Systems → Circuit Breakers → Moulded Case Circuit Breakers → Accessories for Tmax T

