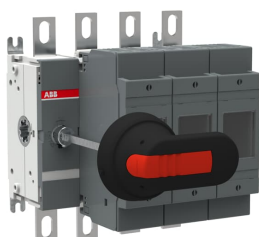


PRODUCT-DETAILS

# OS200D03N3P

## OS200D03N3P SWITCH FUSE



### General Information

Extended Product Type	OS200D03N3P
Product ID	1SCA022749R8710
EAN	6417019243559
Catalog Description	OS200D03N3P SWITCH FUSE
Long Description	Switch Fuses,Front Operated,4-pole,03 (Left Side),DIN,0,Handle and shaft included,Detachable Neutral Link Integrated Into the Mechanism

### Circular Value

Conflict Minerals Reporting Template (CMRT)	9AKK108467A5658
Environmental Product Declaration - EPD	1SCC311197D0201
REACH Declaration	1SCC011021D0201
RoHS Information	1SCC011020D0201
Toxic Substances Control Act - TSCA	1SCC011025D0201

Eco Transparency

Environmental Product Declaration - EPD	1SCC311197D0201
---	-----------------

Ordering

Minimum Order Quantity	1 piece
Customs Tariff Number	85365080
Country of Origin	Finland (FI)

Popular Downloads

Data Sheet, Technical Information	1SCC311013C0201
Instructions and Manuals	1SCC311012M0219
Environmental Product Declaration - EPD	1SCC311197D0201

Dimensions

Product Net Width	177 mm
Product Net Height	199 mm
Product Net Depth / Length	191 mm
Product Net Weight	3.05 kg 6.72 lb

Technical

Rated Operational Current AC-21A ( $I_g$ )	(500 V) 200 A (690 V) 200 A
Rated Operational Current AC-22A ( $I_g$ )	(380 ... 415 V) 200 A (500 V) 200 A (690 V) 200 A
Rated Operational Current AC-23A ( $I_g$ )	(380 ... 415 V) 200 A (500 V) 200 A (690 V) 200 A
Rated Operational Power AC-23A ( $P_g$ )	(220 ... 240 V) 60 kW (400 V) 110 kW (415 V) 110 kW (500 V) 132 kW (690 V) 200 kW
Conventional Free-air Thermal Current ( $I_{th}$ )	$\Theta = 40\text{ }^{\circ}\text{C}$ 200 A
Conventional Thermal Current ( $I_{the}$ )	Fully Enclosed 200 A
Rated Impulse Withstand Voltage ( $U_{imp}$ )	12 kV

Rated Insulation Voltage (U <sub>i</sub> )	1000 V
Rated Operational Voltage	Main Circuit 690 V AC
Rated Short-time Withstand Current Low Voltage (I <sub>cw</sub> )	for 1 s 8 kiloampere rms
Rated Conditional Short- Circuit Current (I <sub>nc</sub> )	(690 V) 80 kA
Power Loss	at Rated Operating Conditions per Pole 17 W
Pollution Degree	3
Handle Type	Pistol handle and shaft included
Fourth Pole Type	Detachable Neutral Link Integrated Into the Mechanism
Switches Operating Mechanism	03 (Left Side)
Position of Line Terminals	Top In - Bottom Out, Bottom In - Top Out
Fuse Size	NH0
Fuse System	DIN
Operating Mode	Front Operated
Standards	IEC 60947-3
Special Functions	Detachable Neutral
Mounting Type	Base mounting
Number of Poles	3
Terminal Type	Lug terminals
Terminal Width	20 mm
Tightening Torque	15 ... 22 N·m
Rated Current (I <sub>n</sub> )	Main Circuit 200 A

Technical UL/CSA

Tightening Torque	15 ... 22 N·m
-------------------	---------------

Environmental

RoHS Status	Following EU Directive 2011/65/EU and Amendment 2015/863 July 22, 2019
Toxic Substances Control Act - TSCA	1SCC011025D0201

Certificates and Declarations

CCC Certificate	CCC OS200-250 2016
Declaration of Conformity - CE	1SCC311091D2704
DNV GL Certificate	1SCC311123D0203
REACH Declaration	1SCC011021D0201

Container Information		
Package Level 1 Units		box 1 piece
Package Level 1 Width		210 mm 8.27 in
Package Level 1 Depth / Length		236 mm 9.29 in
Package Level 1 Height		163 mm 6.42 in
Package Level 1 Gross Weight		3.4 kg 7.5 lb
Package Level 1 EAN		6417019243559

Classifications		
Object Classification Code		Q
ETIM 7		EC001040 - Fuse switch disconnecter
ETIM 8		EC001040 - Fuse switch disconnecter
ETIM 9		EC001040 - Fuse switch disconnecter
eClass		V11.1 : 27371401
WEEE Category		5. Small Equipment (No External Dimension More Than 50 cm)

Categories	
Low Voltage Products and Systems → Switches → Switch Fuses	

