



Neutral conductor, leading switching, for Front mounting, Accessory for main and emergency stop switch 3LD2 for 63A and for molded case switch 3LD5 UL for 30A

| Model | |
|--|---|
| product brand name | SETRON |
| product designation | Neutral conductor |
| design of the product | accessories for 3LD2 main and EMERGENCY-STOP switches |
| AWG number as coded connectable conductor cross section | |
| • minimum | 14 |
| • maximum | 6 |
| type of connectable conductor cross-sections for main contacts | |
| • finely stranded with core end processing | 1x (2.5...35 mm²) |
| • solid or stranded | 1x (2.5 ... 16 mm²) |

| Approvals Certificates |
|--------------------------|
| General Product Approval |



[Confirmation](#)



| other | Environment |
|-------|-------------|
|-------|-------------|

[Miscellaneous](#)

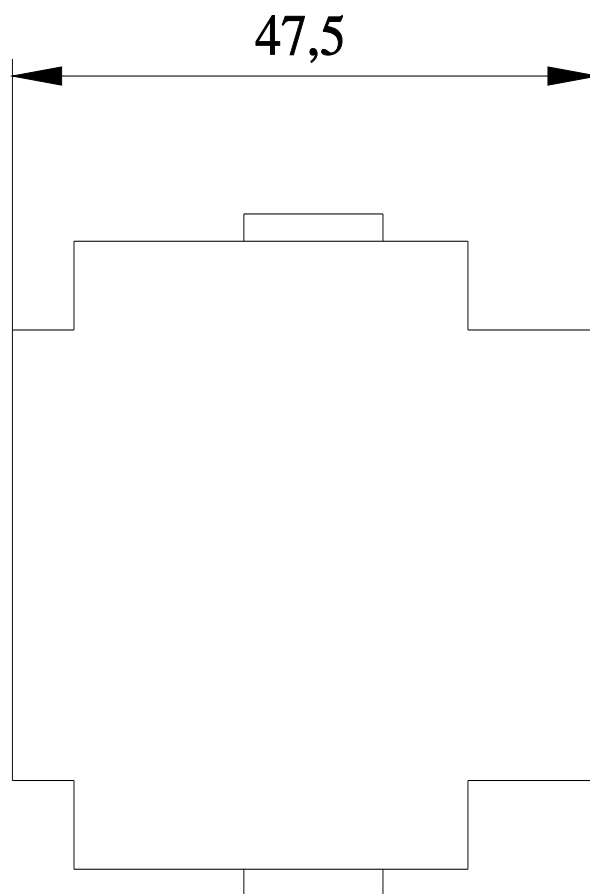
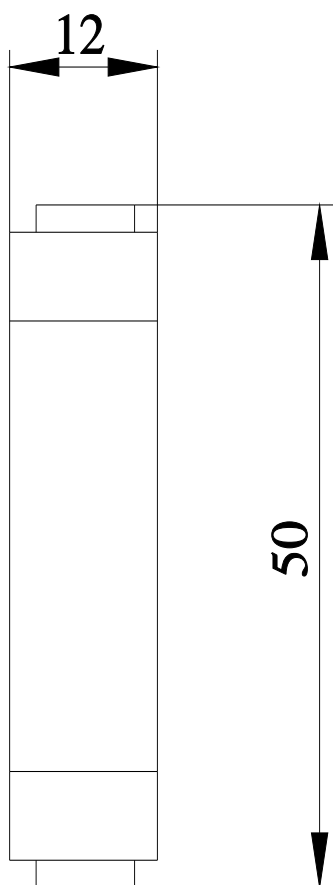
[Confirmation](#)

[Environmental Con-
firmations](#)

[Environmental Con-
firmations](#)

| Further information |
|---------------------|
|---------------------|

Information on the packaging
<https://support.industry.siemens.com/cs/ww/en/view/109813875>
Information- and Downloadcenter (Catalogs, Brochures,...)
<http://www.siemens.com/lowvoltage/catalogs>
Industry Mall (Online ordering system)
<https://mall.industry.siemens.com/mall/en/en/Catalog/product?mlfb=3LD9250-0BA>
Service&Support (Manuals, Certificates, Characteristics, FAQs,...)
<https://support.industry.siemens.com/cs/ww/en/ps/3LD9250-0BA>
Image database (product images, 2D dimension drawings, 3D models, device circuit diagrams, ...)
http://www.automation.siemens.com/bilddb/cax_en.aspx?mlfb=3LD9250-0BA
CAx-Online-Generator
<http://www.siemens.com/cax>
Tender specifications
<http://www.siemens.com/specifications>



last modified:

4/18/2024 