



Neutral conductor, leading switching, for floor mounting. Accessory for main and emergency stop switch 3LD2 for 63A and for molded case switch 3LD5 UL for 30A

Model	
product brand name	SETRON
product designation	Neutral conductor
design of the product	accessories for 3LD2 main and EMERGENCY-STOP switches
AWG number as coded connectable conductor cross section	
• minimum	14
• maximum	6
type of connectable conductor cross-sections for main contacts	
• finely stranded with core end processing	1x (2.5...35 mm²)
• solid or stranded	1x (2.5 ... 16 mm²)

Approvals Certificates
General Product Approval



[Confirmation](#)



other	Environment
-------	-------------

[Miscellaneous](#)

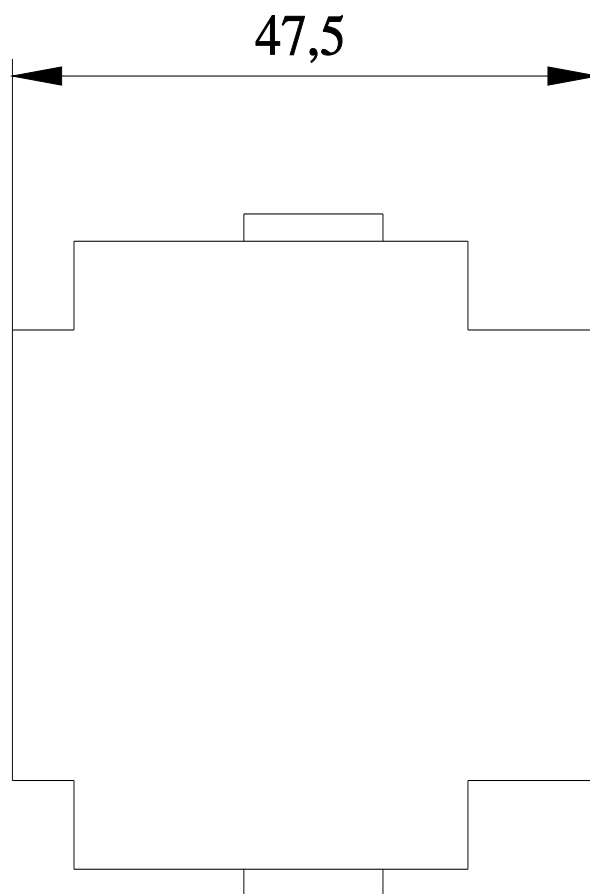
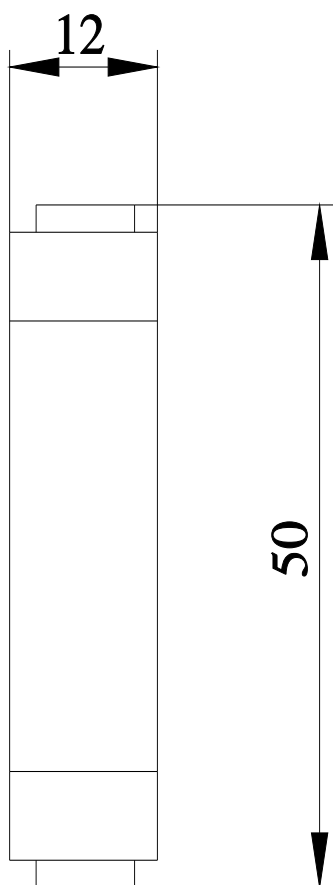
[Confirmation](#)

[Environmental Con-  
firmations](#)

[Environmental Con-  
firmations](#)

Further information
---------------------

Information on the packaging  
<https://support.industry.siemens.com/cs/ww/en/view/109813875>  
Information- and Downloadcenter (Catalogs, Brochures,...)  
<http://www.siemens.com/lowvoltage/catalogs>  
Industry Mall (Online ordering system)  
<https://mall.industry.siemens.com/mall/en/en/Catalog/product?mlfb=3LD9250-0CA>  
Service&Support (Manuals, Certificates, Characteristics, FAQs,...)  
<https://support.industry.siemens.com/cs/ww/en/ps/3LD9250-0CA>  
Image database (product images, 2D dimension drawings, 3D models, device circuit diagrams, ...)  
[http://www.automation.siemens.com/bilddb/cax\\_en.aspx?mlfb=3LD9250-0CA](http://www.automation.siemens.com/bilddb/cax_en.aspx?mlfb=3LD9250-0CA)  
CAx-Online-Generator  
<http://www.siemens.com/cax>  
Tender specifications  
<http://www.siemens.com/specifications>



---

last modified:

4/18/2024 