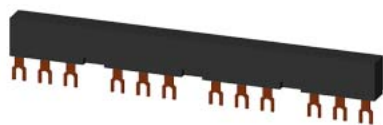


3-phase busbars Modular spacing 55 mm for 4 switches and accessories Fork shape connections



|   |  |
|---|--|
| product category  | Infeed systems                                   |
| product designation                                     | 3-phase busbar                                   |
| suitability for use                                     | circuit-breakers 3RV2                            |
| General technical data                                  |  |
| size of the circuit-breaker                             | S00, S0  |
| Substance Prohibittance (Date)                          | 07/01/2006                                       |
| number of poles for main current circuit                | 3  |
| operational current rated value                         | 63 A   |
| Environmental footprint                                 |  |
| Environmental Product Declaration (EPD)                 | Yes  |
| Global Warming Potential [CO2 eq] total                 | 19.1 kg  |
| Global Warming Potential [CO2 eq] during manufacturing  | 0.405 kg   |
| Global Warming Potential [CO2 eq] during operation      | 18.7 kg  |
| Global Warming Potential [CO2 eq] after end of life     | -0.076 kg  |
| Electrical Safety                                       |  |
| protection class IP on the front according to IEC 60529 | IP20   |
| touch protection on the front according to IEC 60529    | finger-safe, for vertical contact from the front |
| Connections/ Terminals                                  |  |
| type of electrical connection for main current circuit  | screw-type terminals                             |
| Approvals Certificates                                  |  |
| General Product Approval                                |  |
| Test Certificates                                       |  |

[Confirmation](#)



[Special Test Certificate](#)

|                   |                   |
|-------------------|-------------------|
| Test Certificates | Marine / Shipping |
|-------------------|-------------------|

[Type Test Certificates/Test Report](#)



|       |             |
|-------|-------------|
| other | Environment |
|-------|-------------|

[Confirmation](#)



[Environmental Confirmations](#)

## Further information

### Information on the packaging

<https://support.industry.siemens.com/cs/ww/en/view/109813875>

### Information- and Downloadcenter (Catalogs, Brochures,...)

<https://www.siemens.com/ic10>

### Industry Mall (Online ordering system)

<https://mall.industry.siemens.com/mall/en/en/Catalog/product?mlfb=3RV1915-2CB>

### Cax online generator

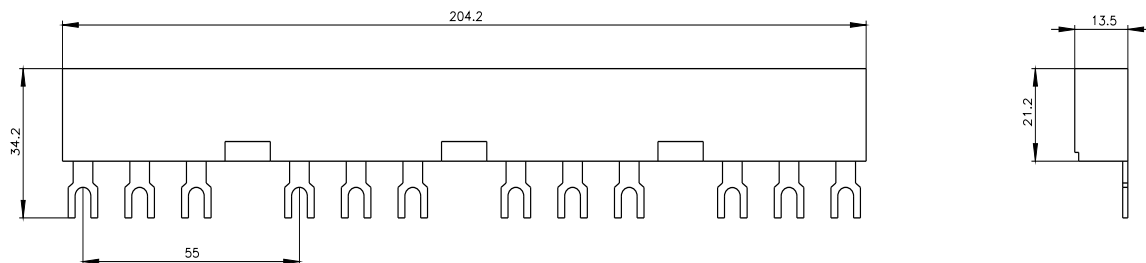
<http://support.automation.siemens.com/WW/CAXorder/default.aspx?lang=en&mlfb=3RV1915-2CB>

### Service&Support (Manuals, Certificates, Characteristics, FAQs,...)

<https://support.industry.siemens.com/cs/ww/en/ps/3RV1915-2CB>

### Image database (product images, 2D dimension drawings, 3D models, device circuit diagrams, EPLAN macros, ...)

[http://www.automation.siemens.com/bilddb/cax\\_de.aspx?mlfb=3RV1915-2CB&lang=en](http://www.automation.siemens.com/bilddb/cax_de.aspx?mlfb=3RV1915-2CB&lang=en)



last modified:

5/29/2024 