

accessory for VL400, mot. op. mech. w/ strd en. mech 220...250V AC/DC

| Model | |
|------------------------------------------------------------------------------|--------------------------------------------------------------------|
| product brand name | SETRON |
| product designation | Motorized operating mechanism with stored energy mechanism |
| design of the product | Accessory for VL400 |
| type of the driving mechanism | Motorized operating mechanism with spring energy store |
| General technical data | |
| operating frequency maximum | 120 1/h |
| Voltage | |
| fuse protection type for external auxiliary power supply required | NEOZED fuse (gL/gG): 2 A / miniature circuit breaker, C char.: 2 A |
| operating range factor control supply voltage rated value | |
| • at DC initial value | 0.85 |
| • at DC full-scale value | 1.1 |
| • at AC at 50 Hz initial value | 0.85 |
| • at AC at 50 Hz full-scale value | 1.1 |
| • at AC at 60 Hz initial value | 0.85 |
| • at AC at 60 Hz full-scale value | 1.1 |
| Protection class | |
| protection class IP | IP30 |
| Control current | |
| operating apparent power | 200 VA |
| control supply voltage | |
| • at DC rated value minimum | 250 V |
| • at DC rated value maximum | 220 V |
| • at AC at 50 Hz rated value minimum | 220 V |
| • at AC at 50 Hz rated value maximum | 250 V |
| • at AC at 60 Hz rated value minimum | 220 V |
| • at AC at 60 Hz rated value maximum | 250 V |
| pulse duration minimum | 50 ms |
| Connections | |
| stripped length | 10 mm |
| connectable conductor cross-section solid | |
| • minimum | 0.75 mm ² |
| • maximum | 1.5 mm ² |
| connectable conductor cross-section stranded | |
| • minimum | 0.75 mm ² |
| • maximum | 1.5 mm ² |
| connectable conductor cross-section finely stranded with core end processing | |
| • minimum | 0.75 mm ² |
| • maximum | 1.5 mm ² |

| | |
|-------------------|-------|
| tightening torque | |
| • maximum | 1 N·m |

Mechanical Design

| | |
|------------|---------|
| height | 160 mm |
| width | 140 mm |
| depth | 160 mm |
| net weight | 4 593 g |

Environmental conditions

| | |
|--------------------------------------|--------|
| ambient temperature during operation | |
| • minimum | -25 °C |
| • maximum | 70 °C |
| ambient temperature during storage | |
| • minimum | -40 °C |
| • maximum | 80 °C |

Certificates

| | |
|-----------------------------------------|---|
| reference code according to IEC 81346-2 | M |
|-----------------------------------------|---|

Approvals Certificates

| | | |
|--------------------------|-------------------|-------------------|
| General Product Approval | Test Certificates | Marine / Shipping |
|--------------------------|-------------------|-------------------|



[Confirmation](#)



[Special Test Certificate](#)



| | | |
|-------------------|-------|-------------|
| Marine / Shipping | other | Environment |
|-------------------|-------|-------------|



[Confirmation](#)

[Miscellaneous](#)

[Environmental Confirmations](#)

Environment

[Environmental Confirmations](#)

Further information

Information on the packaging

<https://support.industry.siemens.com/cs/ww/en/view/109813875>

Information- and Downloadcenter (Catalogs, Brochures,...)

<http://www.siemens.com/lowvoltage/catalogs>

Industry Mall (Online ordering system)

<https://mall.industry.siemens.com/mall/en/en/Catalog/product?mlfb=3VL9400-3MQ00>

Service&Support (Manuals, Certificates, Characteristics, FAQs,...)

<https://support.industry.siemens.com/cs/ww/en/ps/3VL9400-3MQ00>

Image database (product images, 2D dimension drawings, 3D models, device circuit diagrams, ...)

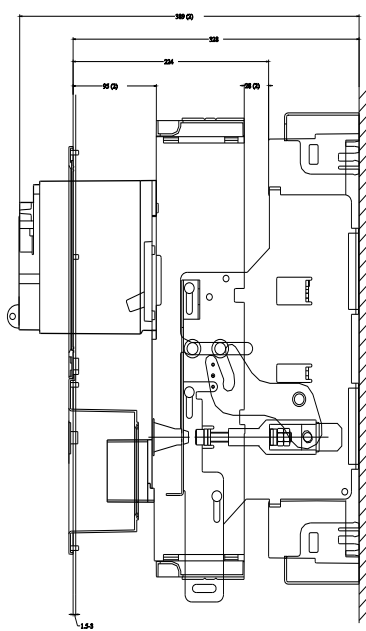
http://www.automation.siemens.com/bilddb/cax_en.aspx?mlfb=3VL9400-3MQ00

CAX-Online-Generator

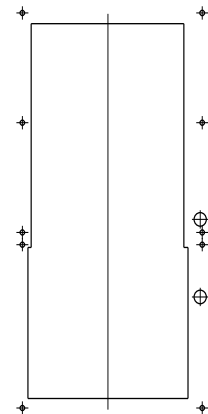
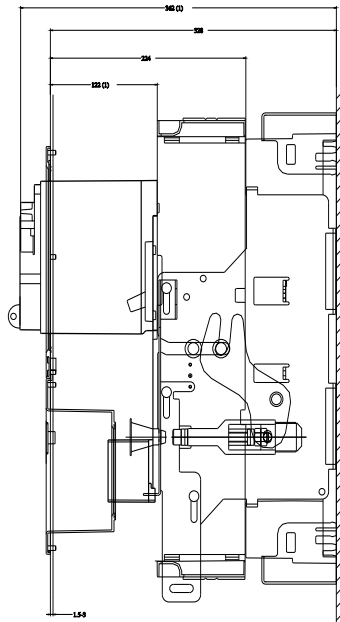
<http://www.siemens.com/cax>

Tender specifications

<http://www.siemens.com/specifications>



(1) Betriebsstellung
(2) Trennstellung



last modified:

3/11/2024 

