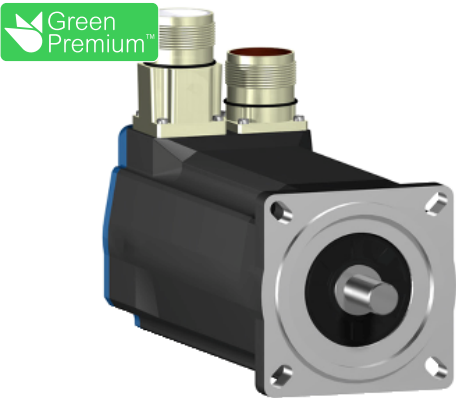


# Product datasheet

Specifications



## AC servo motor BSH - 1.1 N.m - 3000 rpm - keyed shaft - without brake - IP50

BSH0703P11A2A

### Main

Product or component type	Servo motor
Device short name	BSH
Maximum mechanical speed	8000 rpm
Continuous stall torque	2.83 N.m for LXM15LD21M3, 230 V, single phase 1.1 N.m for LXM15LU60N4, 480 V, three phase 1.1 N.m for LXM15LU60N4, 400 V, three phase 1.5 N.m for LXM15LU60N4, 230 V, three phase 2.23 N.m for LXM15LD13M3, 230 V, three phase 2.4 N.m for LXM15LD10N4, 230 V, three phase 2.4 N.m for LXM15LD10N4, 400 V, three phase 2.4 N.m for LXM15LD10N4, 480 V, three phase 2.83 N.m for LXM15LD17N4, 230 V, three phase 2.83 N.m for LXM15LD17N4, 400 V, three phase 2.83 N.m for LXM15LD17N4, 480 V, three phase 2.83 N.m for LXM15LD21M3, 230 V, three phase 2.8 N.m for LXM05AD17M2, 200...240 V, single phase 2.8 N.m for LXM05AD17M3X, 200...240 V, three phase 2.8 N.m for LXM05AD22N4, 380...480 V, three phase 2.8 N.m for LXM05AD28M2, 200...240 V, single phase 2.8 N.m for LXM05BD17M2, 200...240 V, single phase 2.8 N.m for LXM05BD17M3X, 200...240 V, three phase 2.8 N.m for LXM05BD22N4, 380...480 V, three phase 2.8 N.m for LXM05BD28M2, 200...240 V, single phase 2.8 N.m for LXM05CD17M2, 200...240 V, single phase 2.8 N.m for LXM05CD17M3X, 200...240 V, three phase 2.8 N.m for LXM05CD22N4, 380...480 V, three phase 2.8 N.m for LXM05CD28M2, 200...240 V, single phase 3.1 N.m for LXM32.D18N4 at 6 A, 400 V, three phase 3.1 N.m for LXM32.D18N4 at 6 A, 480 V, three phase
Peak stall torque	5.99 N.m for LXM15LD21M3, 230 V, single phase 7.16 N.m for LXM05AD17M2, 200...240 V, single phase 10.3 N.m for LXM05AD28M2, 200...240 V, single phase 7.16 N.m for LXM05BD17M2, 200...240 V, single phase 10.3 N.m for LXM05BD28M2, 200...240 V, single phase 7.16 N.m for LXM05CD17M2, 200...240 V, single phase 10.3 N.m for LXM05CD28M2, 200...240 V, single phase 3.3 N.m for LXM15LU60N4, 480 V, three phase 3.3 N.m for LXM15LU60N4, 400 V, three phase 3.3 N.m for LXM15LU60N4, 230 V, three phase 6 N.m for LXM15LD13M3, 230 V, three phase 5.3 N.m for LXM15LD10N4, 230 V, three phase 5.3 N.m for LXM15LD10N4, 400 V, three phase 5.3 N.m for LXM15LD10N4, 480 V, three phase 7.71 N.m for LXM15LD17N4, 230 V, three phase 7.71 N.m for LXM15LD17N4, 400 V, three phase 7.71 N.m for LXM15LD17N4, 480 V, three phase 9.28 N.m for LXM15LD21M3, 230 V, three phase 7.16 N.m for LXM05AD17M3X, 200...240 V, three phase 8.75 N.m for LXM05AD22N4, 380...480 V, three phase 7.16 N.m for LXM05BD17M3X, 200...240 V, three phase 8.75 N.m for LXM05BD22N4, 380...480 V, three phase 7.16 N.m for LXM05CD17M3X, 200...240 V, three phase 8.75 N.m for LXM05CD22N4, 380...480 V, three phase 11.3 N.m for LXM32.D18N4 at 6 A, 400 V, three phase 11.3 N.m for LXM32.D18N4 at 6 A, 480 V, three phase
Nominal output power	750 W for LXM05AD17M2, 200...240 V, single phase 750 W for LXM05AD28M2, 200...240 V, single phase

	750 W for LXM05BD17M2, 200...240 V, single phase 750 W for LXM05BD28M2, 200...240 V, single phase 750 W for LXM05CD17M2, 200...240 V, single phase 750 W for LXM05CD28M2, 200...240 V, single phase 750 W for LXM15LD21M3, 230 V, single phase 1250 W for LXM15LD10N4, 400 V, three phase 1300 W for LXM15LD17N4, 400 V, three phase 1400 W for LXM15LD17N4, 480 V, three phase 1500 W for LXM15LD10N4, 480 V, three phase 350 W for LXM15LU60N4, 230 V, three phase 700 W for LXM15LD13M3, 230 V, three phase 700 W for LXM15LU60N4, 400 V, three phase 750 W for LXM05AD17M3X, 200...240 V, three phase 750 W for LXM05AD22N4, 380...480 V, three phase 750 W for LXM05BD17M3X, 200...240 V, three phase 750 W for LXM05BD22N4, 380...480 V, three phase 750 W for LXM05CD17M3X, 200...240 V, three phase 750 W for LXM05CD22N4, 380...480 V, three phase 750 W for LXM15LD10N4, 230 V, three phase 750 W for LXM15LD17N4, 230 V, three phase 750 W for LXM15LD21M3, 230 V, three phase 950 W for LXM15LU60N4, 480 V, three phase 1300 W for LXM32.D18N4 at 6 A, 400 V, three phase 1300 W for LXM32.D18N4 at 6 A, 480 V, three phase
Nominal torque	2.4 N.m for LXM05AD17M2, 200...240 V, single phase 2.4 N.m for LXM05AD28M2, 200...240 V, single phase 2.4 N.m for LXM05BD17M2, 200...240 V, single phase 2.4 N.m for LXM05BD28M2, 200...240 V, single phase 2.4 N.m for LXM05CD17M2, 200...240 V, single phase 2.4 N.m for LXM05CD28M2, 200...240 V, single phase 2.4 N.m for LXM15LD21M3, 230 V, single phase 1.12 N.m for LXM15LU60N4, 230 V, three phase 1.12 N.m for LXM15LU60N4, 400 V, three phase 1.12 N.m for LXM15LU60N4, 480 V, three phase 1.8 N.m for LXM15LD10N4, 480 V, three phase 1.96 N.m for LXM15LD17N4, 480 V, three phase 2 N.m for LXM15LD10N4, 400 V, three phase 2 N.m for LXM15LD17N4, 400 V, three phase 2.23 N.m for LXM15LD13M3, 230 V, three phase 2.4 N.m for LXM05AD17M3X, 200...240 V, three phase 2.4 N.m for LXM05AD22N4, 380...480 V, three phase 2.4 N.m for LXM05BD17M3X, 200...240 V, three phase 2.4 N.m for LXM05BD22N4, 380...480 V, three phase 2.4 N.m for LXM05CD17M3X, 200...240 V, three phase 2.4 N.m for LXM05CD22N4, 380...480 V, three phase 2.4 N.m for LXM15LD10N4, 230 V, three phase 2.4 N.m for LXM15LD17N4, 230 V, three phase 2.4 N.m for LXM15LD21M3, 230 V, three phase 2.44 N.m for LXM32.D18N4 at 6 A, 400 V, three phase 2.44 N.m for LXM32.D18N4 at 6 A, 480 V, three phase
Nominal speed	3000 rpm for LXM15LD13M3, 230 V, three phase 3000 rpm for LXM05AD17M2, 200...240 V, single phase 3000 rpm for LXM05BD17M2, 200...240 V, single phase 3000 rpm for LXM05CD17M2, 200...240 V, single phase 3000 rpm for LXM05AD17M3X, 200...240 V, three phase 3000 rpm for LXM05BD17M3X, 200...240 V, three phase 3000 rpm for LXM05CD17M3X, 200...240 V, three phase 3000 rpm for LXM15LU60N4, 230 V, three phase 8000 rpm for LXM15LD10N4, 480 V, three phase 8000 rpm for LXM15LU60N4, 480 V, three phase 3000 rpm for LXM15LD10N4, 230 V, three phase 6000 rpm for LXM15LD10N4, 400 V, three phase 3000 rpm for LXM05AD28M2, 200...240 V, single phase 3000 rpm for LXM05BD28M2, 200...240 V, single phase 3000 rpm for LXM05CD28M2, 200...240 V, single phase 3000 rpm for LXM15LD21M3, 230 V, single phase 3000 rpm for LXM05AD22N4, 380...480 V, three phase 3000 rpm for LXM05BD22N4, 380...480 V, three phase 3000 rpm for LXM05CD22N4, 380...480 V, three phase 3000 rpm for LXM15LD17N4, 230 V, three phase 3000 rpm for LXM15LD21M3, 230 V, three phase 6000 rpm for LXM15LD17N4, 400 V, three phase 6000 rpm for LXM15LU60N4, 400 V, three phase 7000 rpm for LXM15LD17N4, 480 V, three phase 5000 rpm for LXM32.D18N4 at 6 A, 400 V, three phase 5000 rpm for LXM32.D18N4 at 6 A, 480 V, three phase
Product compatibility	LXM05AD17M2 at 200...240 V single phase LXM05AD28M2 at 200...240 V single phase LXM05BD17M2 at 200...240 V single phase LXM05BD28M2 at 200...240 V single phase LXM05CD17M2 at 200...240 V single phase LXM05CD28M2 at 200...240 V single phase LXM15LD21M3 at 230 V single phase LXM15LU60N4 at 230 V three phase LXM15LD13M3 at 230 V three phase LXM15LU60N4 at 400 V three phase LXM15LU60N4 at 480 V three phase LXM15LD10N4 at 400 V three phase LXM05AD17M3X at 200...240 V three phase LXM05BD17M3X at 200...240 V three phase

	LXM05CD17M3X at 200...240 V three phase LXM15LD10N4 at 230 V three phase LXM15LD10N4 at 480 V three phase LXM15LD21M3 at 230 V three phase LXM15LD17N4 at 230 V three phase LXM05AD22N4 at 380...480 V three phase LXM05BD22N4 at 380...480 V three phase LXM05CD22N4 at 380...480 V three phase LXM15LD17N4 at 400 V three phase LXM15LD17N4 at 480 V three phase LXM32.D18N4 at 400 V three phase LXM32.D18N4 at 480 V three phase
Shaft end	Keyed
IP degree of protection	IP50 standard
Speed feedback resolution	131072 points/turn
Holding brake	Without
Mounting support	International standard flange
Electrical connection	Rotatable right-angled connectors
<b>Complementary</b>	
Range compatibility	Lexium 15 Lexium 05 Lexium 32
Supply voltage max	480 V
Network number of phases	Three phase
Continuous stall current	4.1 A
Maximum continuous power	1.7 W
Maximum current Irms	15.2 A for LXM15LD13M3 15.2 A for LXM15LD21M3 15.2 A for LXM15LD17N4 15.2 A for LXM15LU60N4 15.2 A for LXM15LD10N4 17 A for LXM05AD17M2 17 A for LXM05AD28M2 17 A for LXM05AD17M3X 17 A for LXM05AD22N4 17 A for LXM05BD17M2 17 A for LXM05BD28M2 17 A for LXM05BD17M3X 17 A for LXM05BD22N4 17 A for LXM05CD17M2 17 A for LXM05CD28M2 17 A for LXM05CD17M3X 17 A for LXM05CD22N4 17 A for LXM32.D18N4
Maximum permanent current	17 A
Switching frequency	8 kHz
Second shaft	Without second shaft end
Shaft diameter	14 mm
Shaft length	30 mm
Key width	20 mm
Feedback type	Single turn SinCos Hiperface
Motor flange size	70 mm
Number of motor stacks	3
Torque constant	0.78 N.m/A at 120 °C
Back emf constant	49 V/krpm at 120 °C
Number of motor poles	6
Rotor inertia	0.58 kg.cm²
Stator resistance	2.7 Ohm at 20 °C

Stator inductance	13 mH at 20 °C
Stator electrical time constant	4.82 ms at 20 °C
Maximum radial force Fr	400 N at 6000 rpm 430 N at 5000 rpm 460 N at 4000 rpm 510 N at 3000 rpm 580 N at 2000 rpm 730 N at 1000 rpm
Maximum axial force Fa	0.2 x Fr
Type of cooling	Natural convection
Length	220 mm
Centring collar diameter	60 mm
Centring collar depth	2.5 mm
Number of mounting holes	4
Mounting holes diameter	5.5 mm
Circle diameter of the mounting holes	82 mm
Net weight	3.62 kg

### Packing Units

Unit Type of Package 1	PCE
Number of Units in Package 1	1
Package 1 Height	11.0 cm
Package 1 Width	39.0 cm
Package 1 Length	18.6 cm
Package 1 Weight	4.044 kg
Unit Type of Package 2	P06
Number of Units in Package 2	12
Package 2 Height	40.0 cm
Package 2 Width	60.0 cm
Package 2 Length	80.0 cm
Package 2 Weight	57.1 kg

### Offer Sustainability

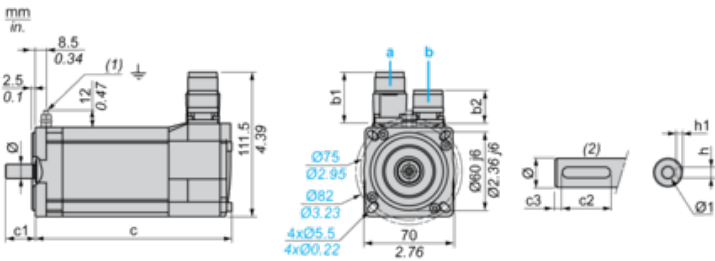
Sustainable offer status	Green Premium product
REACH Regulation	<a href="#">REACH Declaration</a>
EU RoHS Directive	Pro-active compliance (Product out of EU RoHS legal scope) <a href="#">EU RoHS Declaration</a>
Mercury free	Yes
China RoHS Regulation	<a href="#">China RoHS declaration</a>
RoHS exemption information	<a href="#">Yes</a>
Environmental Disclosure	<a href="#">Product Environmental Profile</a>
WEEE	The product must be disposed on European Union markets following specific waste collection and never end up in rubbish bins
PVC free	Yes

### Contractual warranty

Warranty	18 months
----------	-----------

Servo Motors Dimensions

Example with Straight Connectors



- a: Power supply for servo motor brake
- b: Power supply for servo motor encoder
- (1) M4 screw
- (2) Shaft end, keyed slot (optional)

Dimensions in mm

Straight connectors		Rotatable angled connectors		c (without brake)	c (with brake)	c1	c2	c3	h	h1	Ø	Ø1 for screws
b1	b2	b1	b2									
39.5	25.5	39.5	39.5	220	254	30	20	5	5 N9	3 <sup>+0.1</sup> <sub>0</sub>	14 k6	M5 x 12.5

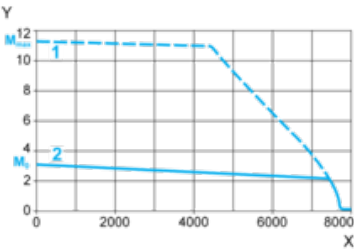
Dimensions in in.

Straight connectors		Rotatable angled connectors		c (without brake)	c (with brake)	c1	c2	c3	h	h1	Ø	Ø1 for screws
b1	b2	b1	b2									
1.55	1.00	1.55	1.55	8.66	10.00	1.18	0.78	0.19	0.20 N9	0.12 <sup>+0.004</sup> <sub>0</sub>	0.55 k6	M5 x 0.49

400 V 3-Phase Supply Voltage

Torque/Speed Curves

Servo motor with LXM32•D18N4 servo drive

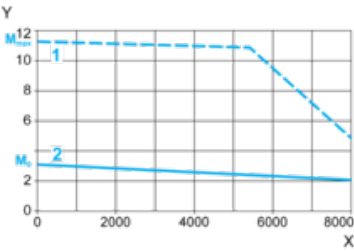


- X Speed in rpm
- Y Torque in Nm
- 1 Peak torque
- 2 Continuous torque

480 V 3-Phase Supply Voltage

Torque/Speed Curves

Servo motor with LXM32•D18N4 servo drive



- X Speed in rpm
- Y Torque in Nm
- 1 Peak torque
- 2 Continuous torque

Recommended replacement(s)