

# Product datasheet

Specifications



advanced touchscreen panel 800 x 600 pixels SVGA- 12.1" TFT - 96 MB

HMIGTO6310

## Main

|                           |   |
|---------------------------|---|
| Range of product          | Harmony GTO   |
| Product or component type | Advanced touchscreen panel  |
| Display colour            | 65536 colours   |
| Display size              | 12.1 inch   |
| Supply                    | External source   |
| Operating system          | Harmony   |
| Battery type              | Lithium battery for internal RAM, autonomy: 100 days, charging time = 5 day(s), battery life = 10 year(s) |

## Complementary

|                                |  |
|--------------------------------|--|
| Terminal type                  | Touchscreen display  |
| Display type                   | Backlit colour TFT LCD   |
| Display resolution             | 800 x 600 pixels SVGA  |
| Touch sensitive zone           | 1024 x 1024  |
| Touch panel                    | Resistive film, 1000000 cycles   |
| Backlight lifespan             | 50000 hours white at 25 °C   |
| Brightness                     | 16 levels - control by touch panel<br>16 levels - control by software  |
| Character font                 | Taiwanese (traditional Chinese)<br>ASCII (European characters)<br>Chinese (simplified Chinese)<br>Japanese (ANK, Kanji)<br>Korean  |
| [Us] rated supply voltage      | 24 V DC  |
| Supply voltage limits          | 19.2...28.8 V  |
| Inrush current                 | 30 A   |
| Maximum power consumption in W | 12 W when power is not supplied to external devices<br>7 W when backlight is OFF<br>8 W when backlight is dimmed<br>17 W   |
| Local signalling               | Status LED green, steady for offline<br>Status LED green, steady for operating<br>Status LED orange, flashing for software starting up<br>Status LED red, steady for power supply (ON)<br>Status LED clear, faded for power supply (OFF)<br>COM2 LED yellow, steady for data is being transmitted<br>COM2 LED yellow, faded for no data transmission<br>SD card LED green, steady for card is inserted<br>SD card LED green, faded for card is not inserted or is not being accessed |

Disclaimer: This documentation is not intended as a substitute for and is not to be used for determining suitability or reliability of these products for specific user applications

|                            |  |
|----------------------------|--|
| Software designation       | Vijeo Designer configuration software >= V6.1  |
| Memory description         | Flash EPROM, 96 MB   |
| Data backed up             | 512 kB internal RAM (SRAM)   |
| Data storage equipment     | SD card, <= 32 GB<br>SDHC card, <= 32 GB   |
| Downloadable protocols     | Schneider Electric Modicon Modbus<br>Schneider Electric Modicon Uni-TE<br>Schneider Electric Modicon Modbus Plus<br>Schneider Electric Modicon FIPWAY<br>Mitsubishi Melsec third party protocols<br>Omron Sysmac third party protocols<br>Rockwell Automation Allen-Bradley third party protocols<br>Siemens Simatic third party protocols<br>Schneider Electric Modicon Modbus TCP                        |
| Integrated connection type | COM1 serial link SUB-D 9, interface: RS232C, transmission rate: 2400...115200 bps<br>COM2 serial link RJ45, interface: RS485, transmission rate: 2400...115200 bps<br>COM2 serial link RJ45, interface: RS485, transmission rate: 187.5 kbps compatible with Siemens MPI<br>Ethernet RJ45, interface: 10BASE-T/100BASE-TX<br>Ethernet RJ45, interface: IEEE 802.3<br>USB 2.0 type A<br>USB 2.0 type mini B |
| Product mounting           | Flush mounting   |
| Fixing mode                | By 4 screw clamps  |
| Front material             | PPT  |
| Enclosure material         | PPT  |
| Type of cooling            | Natural convection   |
| Width                      | 315 mm   |
| Height                     | 241 mm   |
| Depth                      | 56 mm  |
| Net weight                 | 2.5 kg   |

## Environment

|                                       |  |
|---------------------------------------|--|
| Standards                             | UL 508<br>EN 61131-2<br>IEC 61000-6-2  |
| Product certifications                | C-Tick<br>KCC<br>cULus<br>CE<br>UKCA<br>UKEX   |
| Ambient air temperature for operation | 0...55 °C  |
| Ambient air temperature for storage   | -20...60 °C  |
| Relative humidity                     | 10...90 % without condensation   |
| Operating altitude                    | < 2000 m   |
| IP degree of protection               | IP20 (rear panel) conforming to IEC 60529<br>IP65 (front panel) conforming to IEC 60529  |
| NEMA degree of protection             | NEMA 4X front panel (indoor use)   |
| Shock resistance                      | 147 m/s² 3 chocks in each direction X, Y and Z conforming to EN/IEC 61131-2  |
| Vibration resistance                  | 3.5 mm (f = 5...9 Hz) - X, Y, Z directions for 10 cycles (approx. 100 min) - conforming to EN/IEC 61131-2<br>1 gn (f = 9...150 Hz) - X, Y, Z directions for 10 cycles (approx. 100 min) - conforming to EN/IEC 61131-2 |
| Resistance to electrostatic discharge | 6 kV contact discharge conforming to IEC 61000-4-2 level 3   |

Packing Units

|                              |            |
|------------------------------|------------|
| Unit Type of Package 1       | PCE        |
| Number of Units in Package 1 | 1          |
| Package 1 Height             | 17.500 cm  |
| Package 1 Width              | 32.500 cm  |
| Package 1 Length             | 39.000 cm  |
| Package 1 Weight             | 3.507 kg   |
| Unit Type of Package 2       | P12        |
| Number of Units in Package 2 | 30         |
| Package 2 Height             | 104.000 cm |
| Package 2 Width              | 80.000 cm  |
| Package 2 Length             | 120.000 cm |
| Package 2 Weight             | 122.500 kg |

Offer Sustainability

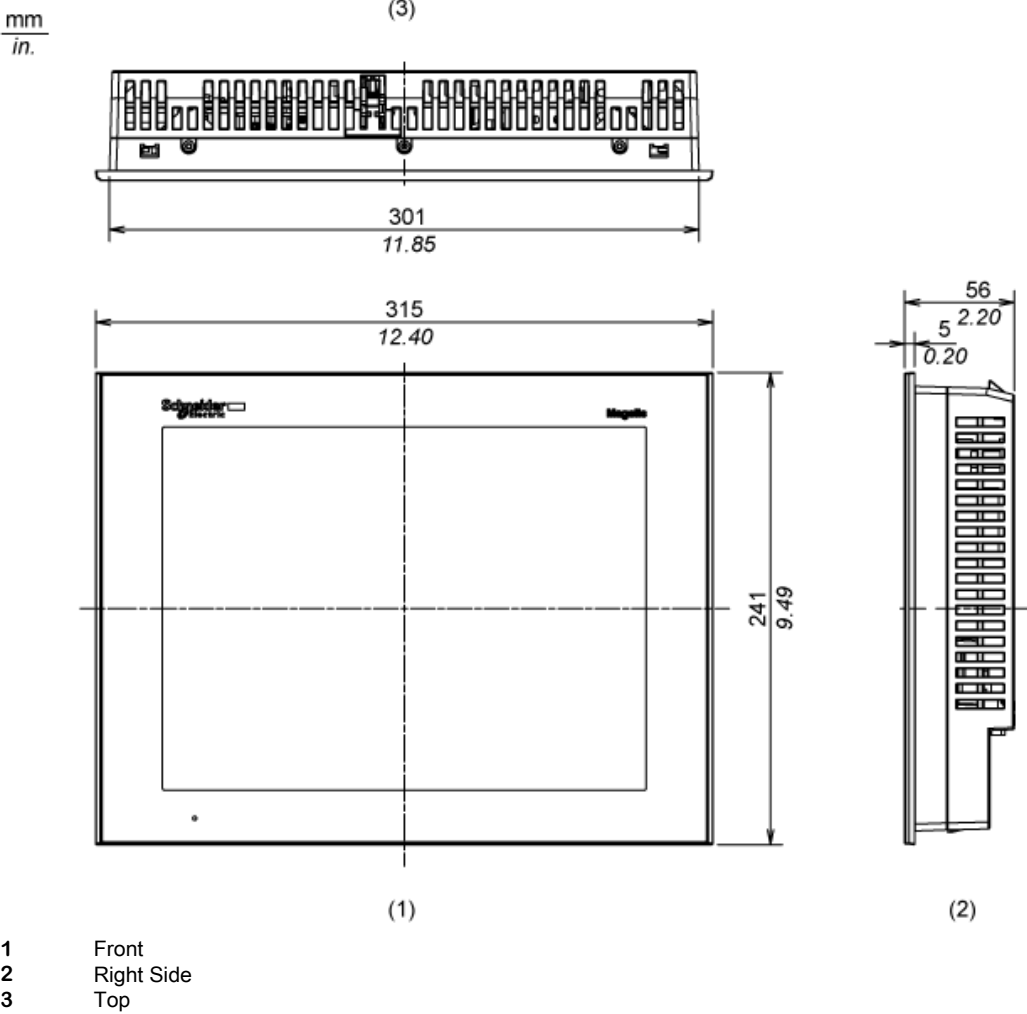
|                            |   |
|----------------------------|---|
| Sustainable offer status   | Green Premium product   |
| REACH Regulation           | <a href="#">REACH Declaration</a>   |
| REACH free of SVHC         | Yes   |
| EU RoHS Directive          | Pro-active compliance (Product out of EU RoHS legal scope)<br><a href="#">EU RoHS Declaration</a>                           |
| Mercury free               | Yes   |
| China RoHS Regulation      | <a href="#">China RoHS declaration</a>  |
| RoHS exemption information | <a href="#">Yes</a>   |
| WEEE                       | The product must be disposed on European Union markets following specific waste collection and never end up in rubbish bins |

Contractual warranty

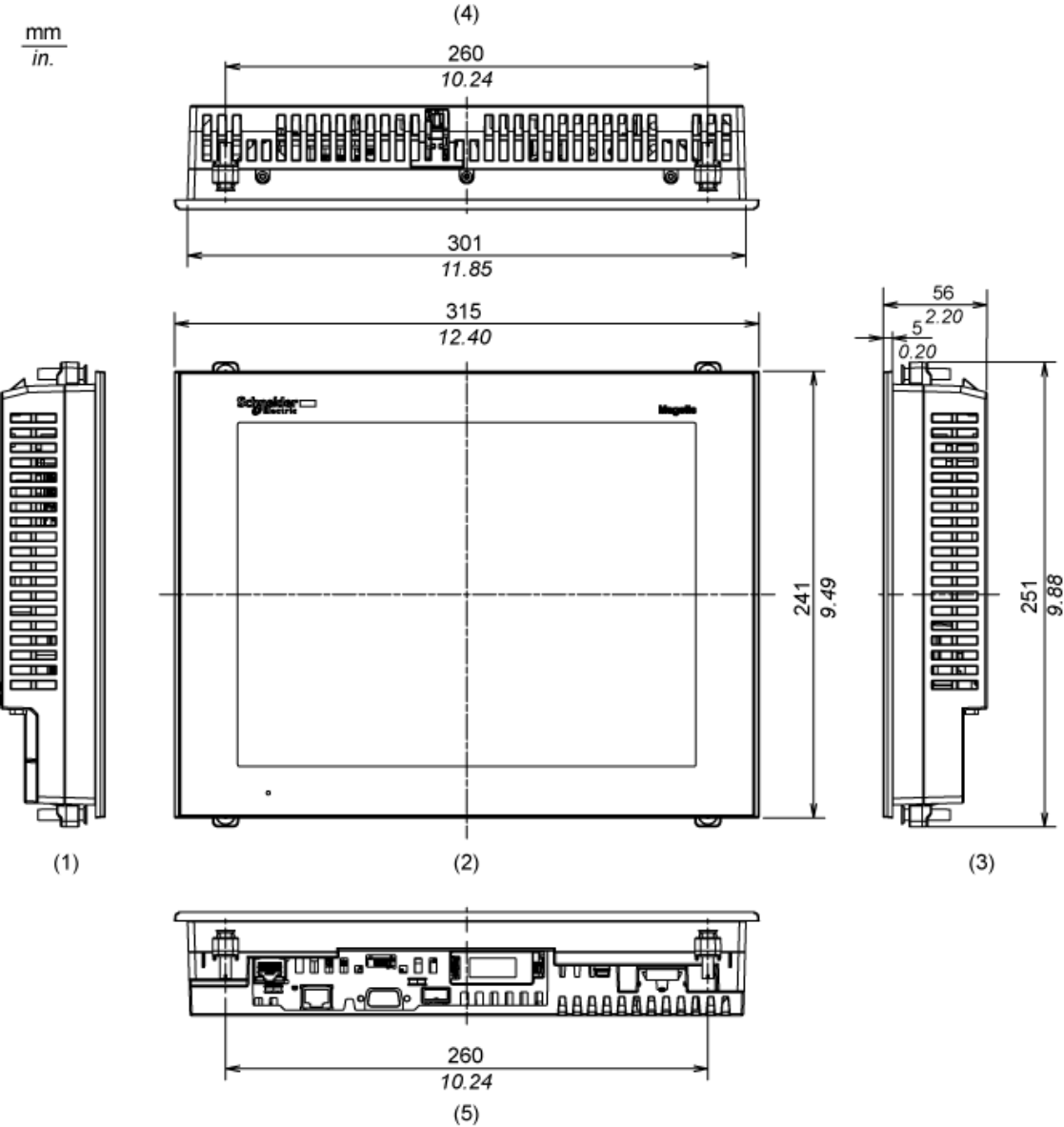
|          |           |
|----------|-----------|
| Warranty | 18 months |
|----------|-----------|

Dimensions

External Dimensions

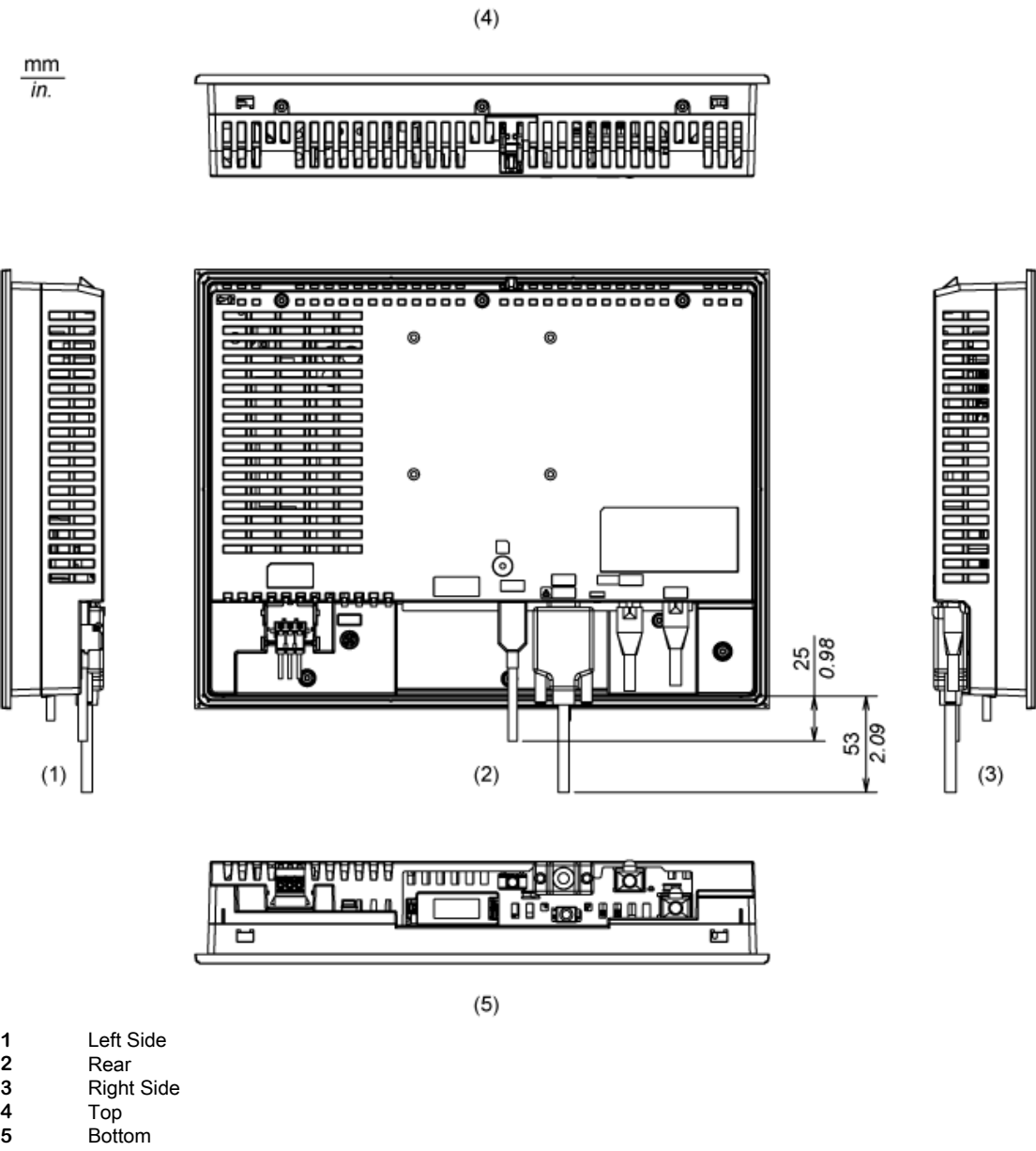


Installation with Installation Fasteners



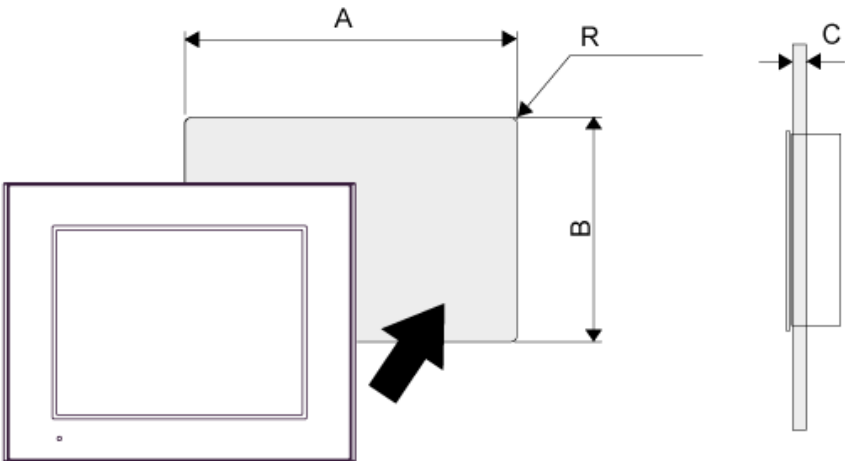
- 1 Left Side
- 2 Front
- 3 Right Side
- 4 Top
- 5 Bottom

Dimensions with Cables



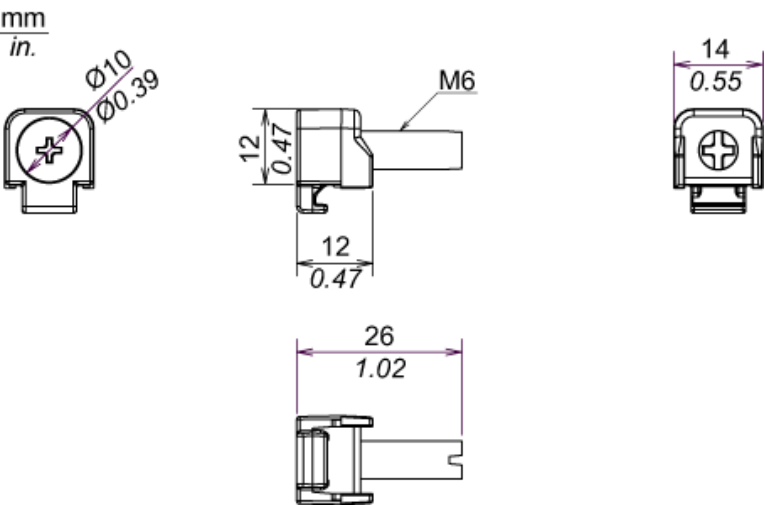
Mounting

Panel Cut Dimensions



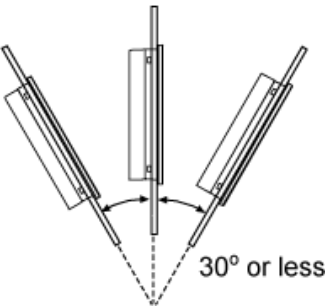
| A              |                   | B              |                  | C       |            | R      |           |
|----------------|-------------------|----------------|------------------|---------|------------|--------|-----------|
| mm             | in.               | mm             | in.              | mm      | in.        | mm     | in.       |
| 301.5 (+1, -0) | 11.87 (+0.04, -0) | 227.5 (+1, -0) | 8.96 (+0.04, -0) | 1.6...5 | 0.06...0.2 | 3 max. | 0.12 max. |

Installation Fastener Dimensions



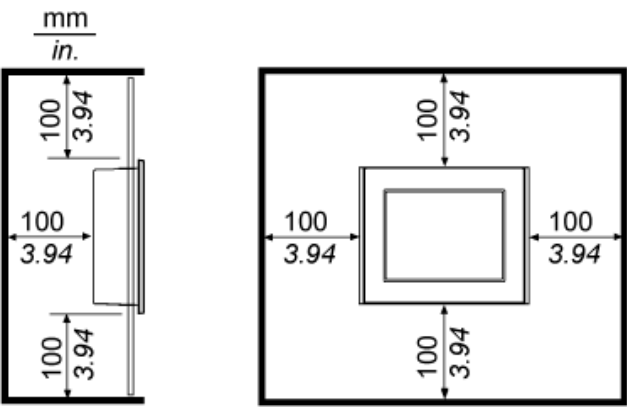
Installation Requirements

Mounting Angle



When installing the panel in a slanted position with an incline more than 30°, the ambient temperature must not exceed 40 °C (104 °F). You may need to use forced air cooling (fan,A/C) to ensure the ambient operating temperature is 40°C or less (104 °F or less).

Clearance



Recommended replacement(s)