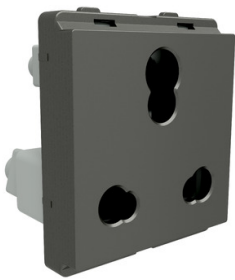


# Product datasheet

Specifications



## Socket-outlet, Livia, 2P+E with shutter, 6A/16A, painted grey

P2106\_PG

### Main

Range	Livia
Product or component type	Socket-outlet
Device application	Power supply
Colour tint	Grey

### Complementary

Device mounting	Flush
Fixing mode	By screws By claws
Outlet poles configuration	2P + E with shutter
Rated current	6/16 A at 220...240 V AC 50/60 Hz
Socket additional information	Shuttered
Connections - terminals	Pillar terminal
Material	PC (polycarbonate)
Material	PC (polycarbonate)
Surface treatment	Antibacterial
Surface finish	Matt
IK degree of protection	IK02

### Environment

Standards	IS 1293
Product certifications	ISI
Ambient air temperature for operation	-5...60 °C
Ambient air temperature for storage	-5...60 °C
IP degree of protection	IP2X
Depth	45 mm
Width	45 mm
Height	54 mm

### Packing Units

Unit Type of Package 1	PCE
Number of Units in Package 1	1

Disclaimer: This documentation is not intended as a substitute for and is not to be used for determining suitability or reliability of these products for specific user applications

Package 1 Height	6 cm
Package 1 Width	7 cm
Package 1 Length	15.5 cm
Package 1 Weight	44 g
Unit Type of Package 2	BB1
Number of Units in Package 2	10
Package 2 Height	6 cm
Package 2 Width	10.5 cm
Package 2 Length	21.5 cm
Package 2 Weight	495 g
Unit Type of Package 3	CAR
Number of Units in Package 3	300
Package 3 Height	33.5 cm
Package 3 Width	34.5 cm
Package 3 Length	44 cm
Package 3 Weight	15.65 kg

# Sustainability

**Green Premium™ label** is Schneider Electric’s commitment to delivering products with best-in-class environmental performance. Green Premium promises compliance with the latest regulations, transparency on environmental impacts, as well as circular and low-CO<sub>2</sub> products.

**Guide to assessing product sustainability** is a white paper that clarifies global eco-label standards and how to interpret environmental declarations.

[Learn more about Green Premium >](#)

[Guide to assess a product’s sustainability >](#)



Sustainable Packaging

## Resource performance

✔ Sustainable Packaging

## Well-being performance

✔ Reach Free Of Svhc

✔ Rohs Exemption Information      Yes

Reach Regulation      [REACH Declaration](#)

Eu Rohs Directive      Compliant  
[EU RoHS Declaration](#)

China Rohs Regulation      [China RoHS declaration](#)  
Pro-active China RoHS declaration (out of China RoHS legal scope)