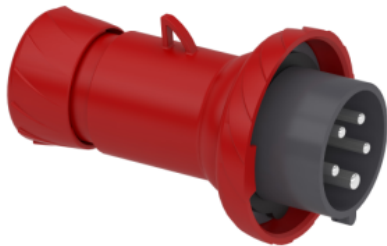


Product datasheet

Specifications



PratiKa wander plug - straight - 16 A - 3P + N + E - 380...415 V AC - IP67

PKE16M735

Main

Range	Mureva
Product or component type	Wander plug
Device short name	Mureva plug
Plug, socket category	Low voltage
Poles description	3P + N + E
Network type	AC
Outlet standard	Industrial

Complementary

Plug, socket, control station shape	Straight
[In] rated current	16 A
[Ue] rated operational voltage	380...415 V
Network frequency	50/60 Hz
Ground lug clockwise position	6 h
Plug, socket material	Housing: self-extinguishing engineering polymer
Contacts material	Sleeves: brass
Connections - terminals	Captive screws
Cable cross section	1...4 mm²
Cable outer diameter	8...15 mm
Cable entry	Cable gland Fair lead
Thread type	Pg 21
Net weight	0.21 kg
Height	142 mm
Width	89 mm
Depth	89 mm
Colour	Grey (RAL 7035)
Voltage colour	Red

Environment

Standards	IEC 60309-2 IEC 60309-1
IP degree of protection	IP67 conforming to IEC 60529
IK degree of protection	IK08 conforming to EN 62262
Fire resistance	850 °C conforming to IEC 60695-2-11
Relative humidity	50 % at 40 °C 70 % at 30 °C 90 % at 20 °C
Operating altitude	2000 m
Ambient air temperature for operation	35 °C (86400 s) -25...40 °C

Packing Units

Unit Type of Package 1	PCE
Number of Units in Package 1	1
Package 1 Height	8.7 cm
Package 1 Width	8.8 cm
Package 1 Length	15.6 cm
Package 1 Weight	222.0 g
Unit Type of Package 2	BB1
Number of Units in Package 2	10
Package 2 Height	17.8 cm
Package 2 Width	26.6 cm
Package 2 Length	27.0 cm
Package 2 Weight	2.398 kg
Unit Type of Package 3	S03
Number of Units in Package 3	20
Package 3 Height	30.0 cm
Package 3 Width	30.0 cm
Package 3 Length	40.0 cm
Package 3 Weight	5.283 kg

Offer Sustainability

REACH Regulation	REACH Declaration
EU RoHS Directive	Compliant EU RoHS Declaration
China RoHS Regulation	China RoHS declaration Product out of China RoHS scope. Substance declaration for your information
Circularity Profile	No need of specific recycling operations

Contractual warranty

Warranty	18 months
----------	-----------

Recommended replacement(s)