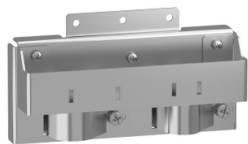


# Product datasheet

Specifications



## Altivar Easy 610, Altivar Process ATV600, Altivar Process ATV900, Altivar Machine ATV340, EMC plate, 30 kW...45 kW

VW3A47804

### Main

Range of product	Altivar Easy 610 Altivar Process ATV600 Altivar Process ATV900 Altivar Machine ATV340
Accessory / separate part type	Mounting plate
Accessory / separate part category	Mounting and fixing accessory
Product compatibility	ATV610 variable speed drive 30 kW motor ATV610 variable speed drive 37 kW motor ATV610 variable speed drive 45 kW motor ATV630 variable speed drive 30 kW motor ATV630 variable speed drive 37 kW motor ATV630 variable speed drive 45 kW motor ATV930 variable speed drive 30 kW motor ATV930 variable speed drive 37 kW motor ATV930 variable speed drive 45 kW motor ATV340 variable speed drive 30 kW motor ATV340 variable speed drive 37 kW motor
accessory / separate part destination	Variable speed drive

### Complementary

Kit composition	screws 1 EMC plate bottom 1 EMC plate top clamps
Net weight	1 kg

### Packing Units

Unit Type of Package 1	PCE
Number of Units in Package 1	1
Package 1 Height	10.16 cm
Package 1 Width	30.23 cm
Package 1 Length	30.23 cm
Package 1 Weight	1.05 kg
Unit Type of Package 2	S04
Number of Units in Package 2	3
Package 2 Height	30 cm
Package 2 Width	40 cm
Package 2 Length	60 cm
Package 2 Weight	4.911 kg

Disclaimer: This documentation is not intended as a substitute for and is not to be used for determining suitability or reliability of these products for specific user applications

## Sustainability


**Green Premium™ label** is Schneider Electric's commitment to delivering products with best-in-class environmental performance. Green Premium promises compliance with the latest regulations, transparency on environmental impacts, as well as circular and low-CO<sub>2</sub> products.


**Guide to assessing product sustainability** is a white paper that clarifies global eco-label standards and how to interpret environmental declarations.

[Learn more about Green Premium >](#)

[Guide to assess a product's sustainability >](#)

## Well-being performance

 Reach Free Of Svhc

 Rohs Exemption Information [Yes](#)

Eu Rohs Directive	Pro-active compliance (Product out of EU RoHS legal scope)
	<a href="#">EU RoHS Declaration</a>

China Rohs Regulation	<a href="#">China RoHS declaration</a>
-----------------------	--