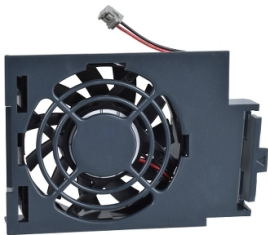


Product data sheet

Specifications



Wear part, fan kit, for variable speed drive, Altivar 61, Altivar 71, Altivar Process 600 900, from 220 to 315kW

VZ3V1213

Product availability: Non-Stock - Not normally stocked in distribution facility

Main

Range Compatibility	Altivar 61/71 Altivar Process 600/900
Accessory / Separate Part Type	Fan kit
Accessory / separate part category	Cooling accessory
Product or Component Type	Fan
Product Weight	0.60 lb(US) (0.27 kg)

Complementary

Kit composition	Fan Mounting bracket Instruction sheet
Product compatibility	Variable speed drive ATV61 Variable speed drive ATV71 Variable speed drive ATV61 Plus Variable speed drive ATV71 Plus Variable speed drive ATV71Q Variable speed drive ATV61Q Variable speed drive ATV630 wall mount 220 kW 380...480 V 1 per drive Variable speed drive ATV630 wall mount 250 kW 380...480 V 2 per drive Variable speed drive ATV630 wall mount 315 kW 380...480 V 3 per drive Variable speed drive ATV930 wall mount 220 kW 380...480 V 1 per drive Variable speed drive ATV930 wall mount 250 kW 380...480 V 2 per drive Variable speed drive ATV930 wall mount 315 kW 380...480 V 3 per drive

Ordering and shipping details

Category	US1CP4C22135
Discount Schedule	CP4C
GTIN	3389119209052
Returnability	Yes
Country of origin	CN

Packing Units

Unit Type of Package 1	PCE
Number of Units in Package 1	1
Package 1 Height	2.95 in (7.500 cm)
Package 1 Width	7.17 in (18.200 cm)
Package 1 Length	7.87 in (20.000 cm)
Package 1 Weight	8.783 oz (249.000 g)

Price is "List Price" and may be subject to a trade discount – check with your local distributor or retailer for actual price.

Disclaimer: This documentation is not intended as a substitute for and is not to be used for determining suitability or reliability of these products for specific user applications

Unit Type of Package 2	S03
Number of Units in Package 2	6
Package 2 Height	11.81 in (30.000 cm)
Package 2 Width	11.81 in (30.000 cm)
Package 2 Length	15.75 in (40.000 cm)
Package 2 Weight	5.093 lb(US) (2.310 kg)