

Product datasheet

Specifications



inductive sensor XS7 40x40x117 - PBT - Sn15 mm - 24..240VAC/DC - terminals

XS7C4A1MPG13

Main

| | |
|------------------------------------|---|
| Range of product | Telemecanique Inductive proximity sensors XS |
| Series name | General purpose |
| Sensor type | Inductive proximity sensor |
| Device application | - |
| Sensor name | XS7 |
| Sensor design | Form 40 x 40 x 117 |
| Size | 117 mm |
| Body type | Fixed |
| Detector flush mounting acceptance | Flush mountable |
| Material | Plastic |
| Enclosure material | PBT |
| Type of output signal | Discrete |
| Wiring technique | 2-wire |
| [Sn] nominal sensing distance | 15 mm |
| Discrete output function | 1 NO or 1 NC programmable |
| Output circuit type | AC/DC |
| Electrical connection | Screw-clamp terminals, 4 x 1.5 mm ² |
| [Us] rated supply voltage | 24...240 V AC 50/60 Hz 24...240 V DC |
| Switching capacity in mA | 5...200 mA DC 5...300 mA AC |
| IP degree of protection | IP67 conforming to IEC 60529 IP65 conforming to IEC 60529 IP69K conforming to DIN 40050 |

Complementary

| | |
|---------------------|-------------------------|
| Detection face | 5 positions turret head |
| Front material | PBT |
| Operating zone | 0...12 mm |
| Differential travel | 3...15% of Sr |
| Repeat accuracy | <= 3% of Sr |

| | |
|--------------------------|--|
| Cable entry number | 1 tapped entry for Pg 13.5 cable gland |
| Status LED | Supply on: 1 LED (green) Output state: 1 LED (yellow) |
| Supply voltage limits | 20...264 V AC/DC |
| Maximum residual current | 1.5 mA open state 120 V 0.6 mA open state 24 V |
| Switching frequency | <= 25 Hz AC <= 50 Hz DC |
| Maximum voltage drop | <5.5 V (closed) |
| Maximum delay first up | 7.5 ms |
| Maximum delay response | 1.2 ms |
| Maximum delay recovery | 1.8 ms |
| Marking | CE |
| Height | 40 mm |
| Length | 40 mm |
| Width | 117 mm |
| Net weight | 0.244 kg |

Environment

| | |
|---------------------------------------|---|
| Product certifications | UL CSA CCC |
| Ambient air temperature for operation | -25...70 °C |
| Ambient air temperature for storage | -40...85 °C |
| Vibration resistance | 25 gn amplitude = +/- 2 mm (f = 10...55 Hz) conforming to IEC 60068-2-6 |
| Shock resistance | 50 gn for 11 ms conforming to EN 60068-2-27 |

Packing Units

| | |
|------------------------------|----------|
| Unit Type of Package 1 | PCE |
| Number of Units in Package 1 | 1 |
| Package 1 Height | 4.5 cm |
| Package 1 Width | 4.5 cm |
| Package 1 Length | 14.5 cm |
| Package 1 Weight | 244.0 g |
| Unit Type of Package 2 | S02 |
| Number of Units in Package 2 | 28 |
| Package 2 Height | 15.0 cm |
| Package 2 Width | 30.0 cm |
| Package 2 Length | 40.0 cm |
| Package 2 Weight | 7.272 kg |
| Unit Type of Package 3 | P06 |
| Number of Units in Package 3 | 448 |
| Package 3 Height | 77.0 cm |
| Package 3 Width | 80.0 cm |
| Package 3 Length | 60.0 cm |

| | |
|------------------|------------|
| Package 3 Weight | 125.092 kg |
|------------------|------------|

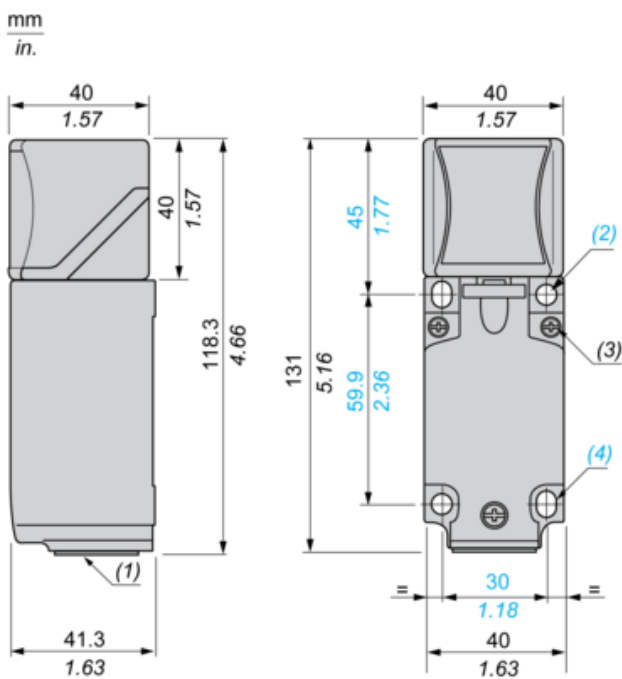
Offer Sustainability

| | |
|----------------------------|---|
| Sustainable offer status | Green Premium product |
| REACH Regulation | REACH Declaration |
| EU RoHS Directive | Pro-active compliance (Product out of EU RoHS legal scope) EU RoHS Declaration |
| Mercury free | Yes |
| RoHS exemption information | Yes |
| Environmental Disclosure | Product Environmental Profile |

Contractual warranty

| | |
|----------|-----------|
| Warranty | 18 months |
|----------|-----------|

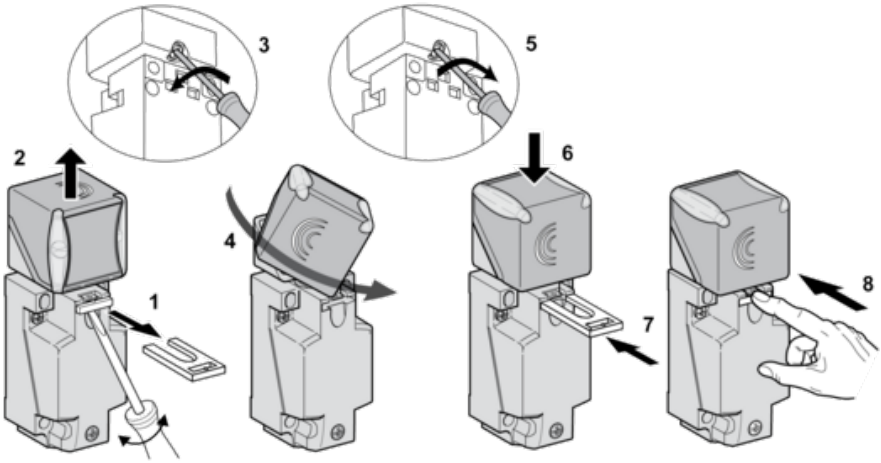
Dimensions



- (1) : Pg 13.5 cable gland.
- (2) : 2 holes Ø 5,45 mm / Ø 0.21 in. Tightening torque: < 1,5 Nm / < 13.3 lb-in.
- (3) : 3 screws M3,5. Tightening torque: < 1,2 Nm / < 10.6 lb-in.
- (4) : 2 alongated holes 5,4 x 7,4 mm / 0.21 x 0.29 in. Tightening torque: < 1,5 Nm / < 13.3 lb-in".

Mounting

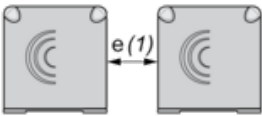
Head Positions



Setting-up Precautions

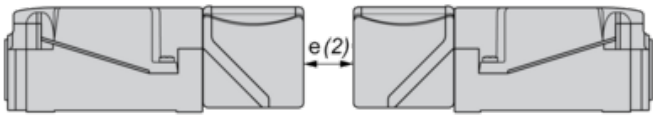
Minimum Mounting Distances (mm)

Side by Side



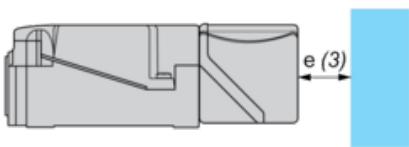
$e(1) \geq 60$

Face to Face



$e(2) \geq 120$

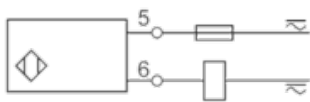
Facing a Metal Object



$e(3) \geq 45$

Wiring Schemes

2-Wire AC or DC (Programmable)



Recommended replacement(s)